



# PSAP mouse mAb(ABT119)

<b>Catalog No</b>	YP-Ab-15619
<b>Isotype</b>	IgG
<b>Reactivity</b>	Human; Predict react with Mouse, Rat
<b>Applications</b>	IHC;WB;IF
<b>Gene Name</b>	ACPP
<b>Protein Name</b>	PSAP
<b>Immunogen</b>	Synthesized peptide derived from human PSAP
<b>Specificity</b>	The antibody can specifically recognize human PSAP protein.
<b>Formulation</b>	Liquid in PBS containing 50% glycerol, 0.5% BSA and 0.106% sodium azide.
<b>Source</b>	Mouse, Monoclonal/IgG2b, Kappa
<b>Purification</b>	The antibody was affinity-purified from mouse ascites by affinity-chromatography using specific immunogen.
<b>Dilution</b>	IHC-p 1:100-500, WB 1:200-1000, IF 1:100-500
<b>Concentration</b>	1 mg/ml
<b>Purity</b>	≥90%
<b>Storage Stability</b>	-20°C/1 year
<b>Synonyms</b>	Prostatic acid phosphatase (PAP;EC 3.1.3.2;5'-nucleotidase;5'-NT;EC 3.1.3.5;Ecto-5'-nucleotidase;Thiamine monophosphatase;TMPase) [Cleaved into: PAPf39]
<b>Observed Band</b>	
<b>Cell Pathway</b>	[Isoform 1]: Secreted .; [Isoform 2]: Cell membrane ; Single-pass type I membrane protein . Lysosome membrane ; Single-pass type I membrane protein . Nucleus . Cytoplasm, cytosol . Appears to shuttle between the cell membrane and intracellular vesicles. Colocalizes with FLOT1 at cell membrane and in intracellular vesicles (PubMed:17638863). Colocalizes with LAMP2 on the lysosome membrane (PubMed:17897319). .
<b>Tissue Specificity</b>	Highly expressed in the prostate, restricted to glandular and ductal epithelial cells. Also expressed in bladder, kidney, pancreas, lung, cervix, testis and ovary. Weak expression in a subset of pancreatic islet cells, squamous epithelia, the pilosebaceous unit, colonic neuroendocrine cells and skin adnexal structures. Low expression in prostate carcinoma cells and tissues. ; [Isoform 2]: Widely expressed. Expressed in the sarcolemma of skeletal muscle.
<b>Function</b>	catalytic activity:A phosphate monoester + H(2)O = an alcohol + phosphate.,similarity:Belongs to the histidine acid phosphatase family.,subcellular location:Predominantly localized in the plasma membrane but also detected in intracellular vesicles.,subunit:Homodimer.,

**Background**

This gene encodes an enzyme that catalyzes the conversion of orthophosphoric monoester to alcohol and orthophosphate. It is synthesized under androgen regulation and is secreted by the epithelial cells of the prostate gland. An alternatively spliced transcript variant encoding a longer isoform has been found for this gene. This isoform contains a transmembrane domain and is localized in the plasma membrane-endosomal-lysosomal pathway. [provided by RefSeq, Sep 2008],

**matters needing attention**

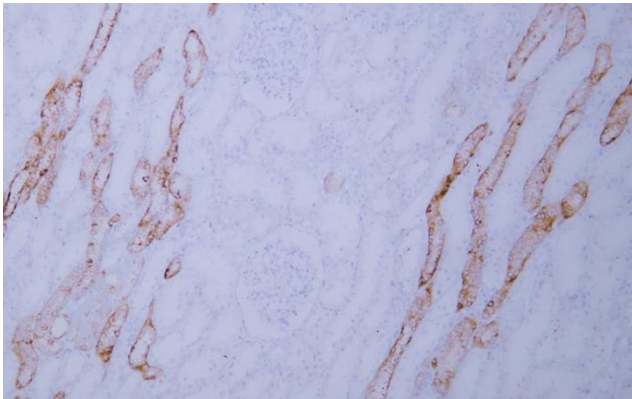
Avoid repeated freezing and thawing!

**Usage suggestions**

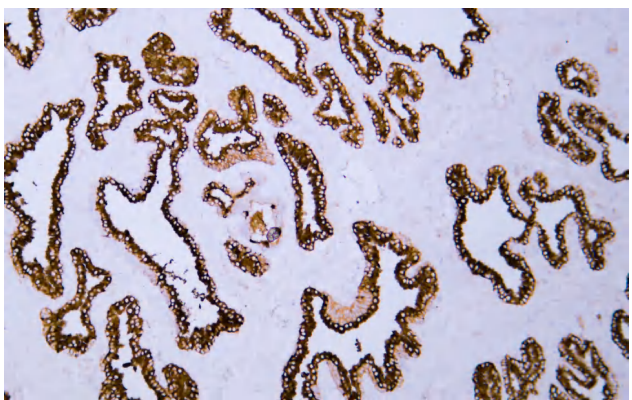
This product can be used in immunological reaction related experiments. For more information, please consult technical personnel.



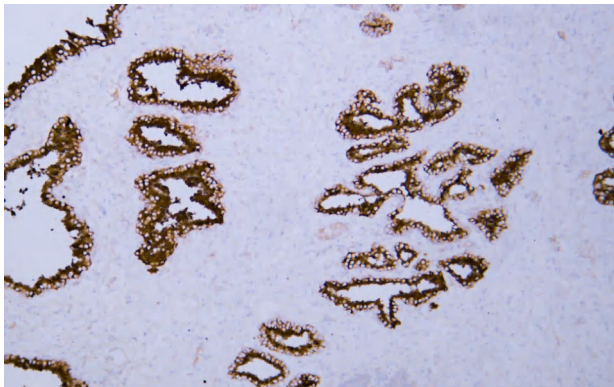
## Products Images



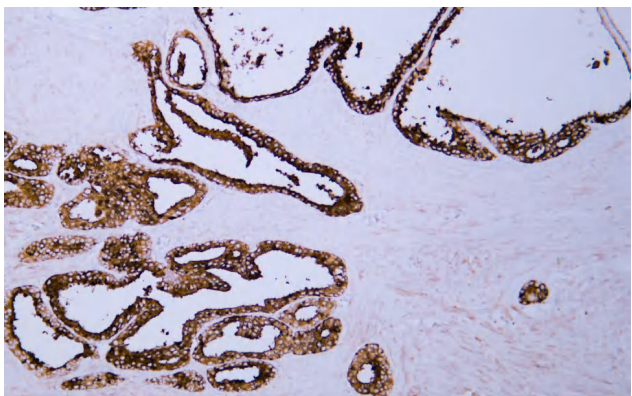
Human kidney tissue was stained with Anti-Prostatic Acid Phosphatase (ABT119) Antibody. Secondary Antibody was Goat anti Rabbit/Mouse polymer HRP, Ready to Use (RS0011) at 37° 45min.



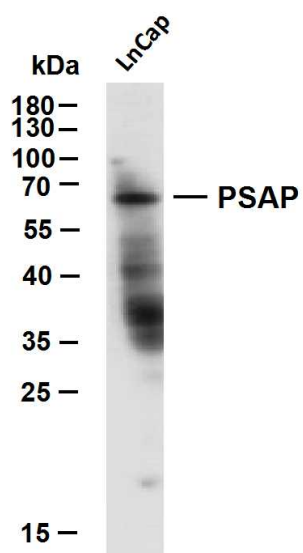
Human prostate tissue was stained with Anti-Prostatic Acid Phosphatase (ABT119) Antibody. Secondary Antibody was Goat anti Rabbit/Mouse polymer HRP, Ready to Use (RS0011) at 37° 45min.



Human prostate tissue was stained with Anti-Prostatic Acid Phosphatase (ABT119) Antibody. Secondary Antibody was Goat anti Rabbit/Mouse polymer HRP, Ready to Use (RS0011) at 37° 45min.



Human prostatic adenocarcinoma tissue was stained with Anti-Prostatic Acid Phosphatase (ABT119) Antibody. Secondary Antibody was Goat anti Rabbit/Mouse polymer HRP, Ready to Use (RS0011) at 37° 45min.



Whole cell lysates were separated by 10% SDS-PAGE, and the membrane was blotted with anti-PSAP (ABT119)antibody. The HRP-conjugated Goat anti-Mouse IgG(H + L) antibody was used to detect the antibody. Lane 1: LnCap Predicted band size: 68kDa Observed band size: 68kDa